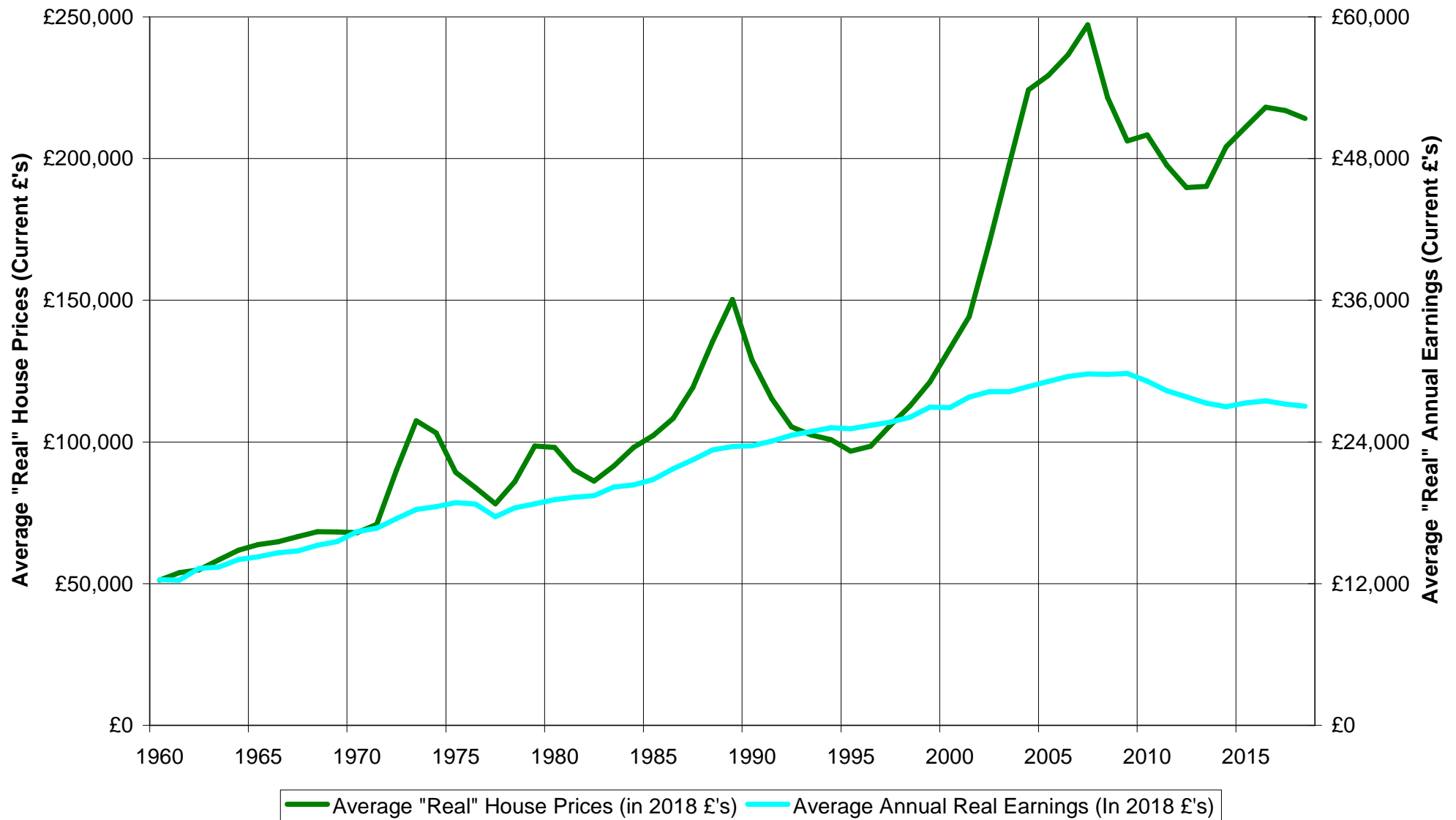


# UK Cost of Housing

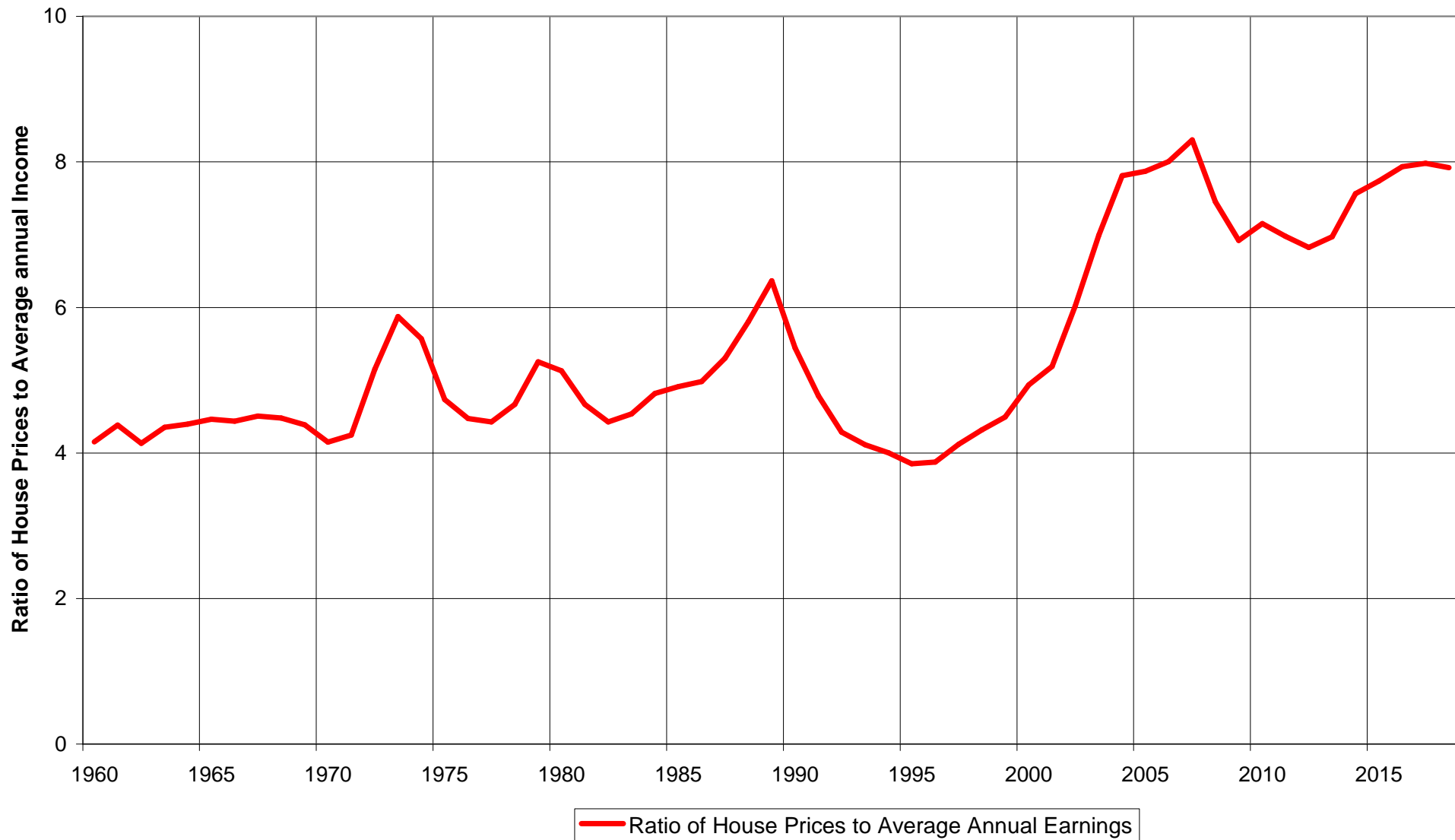
## The long-term view

### More than two generations

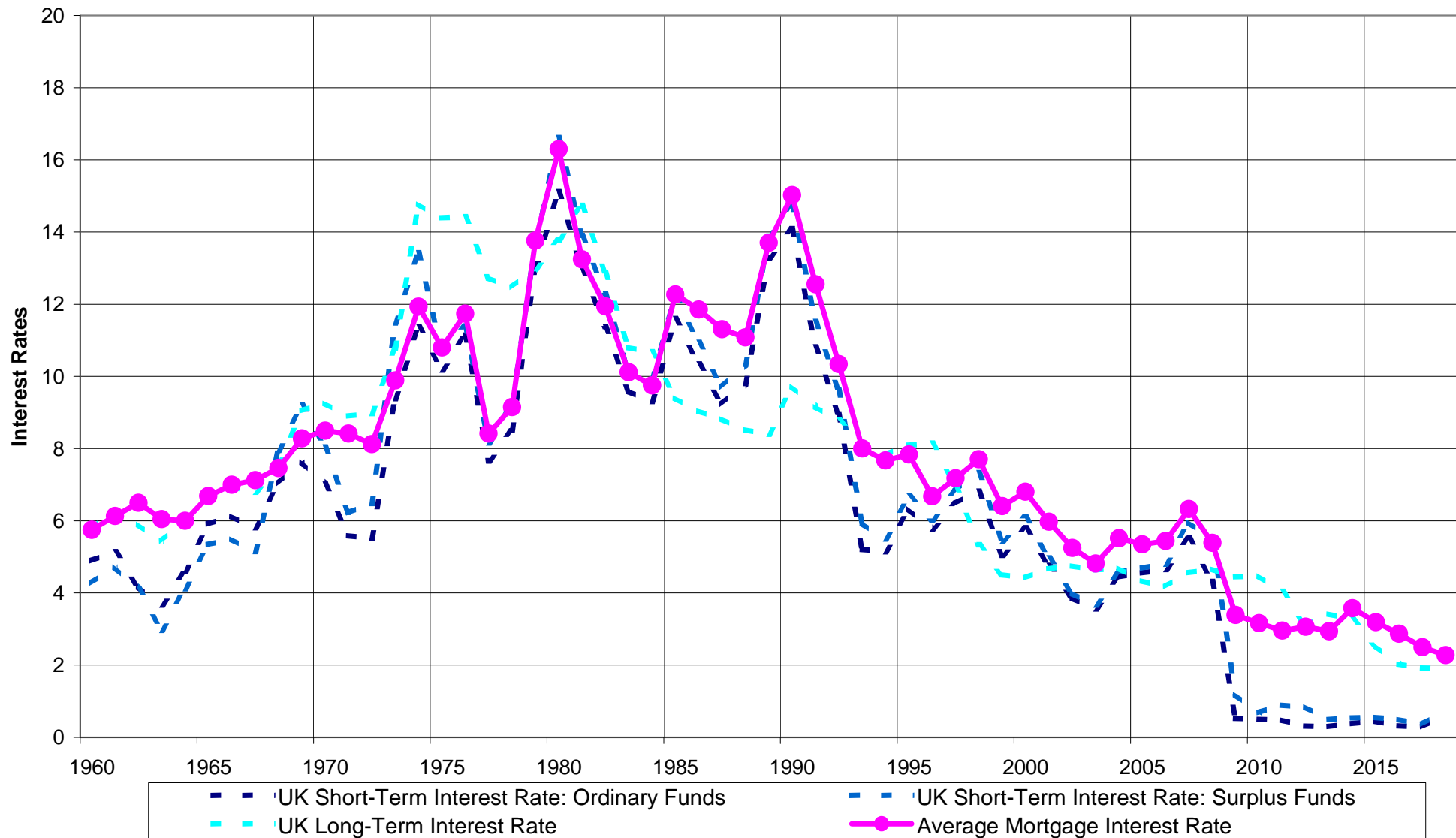
# Average "Real" House Prices (In Current £'s) against Average Annual Real Earnings (In Current £'s)



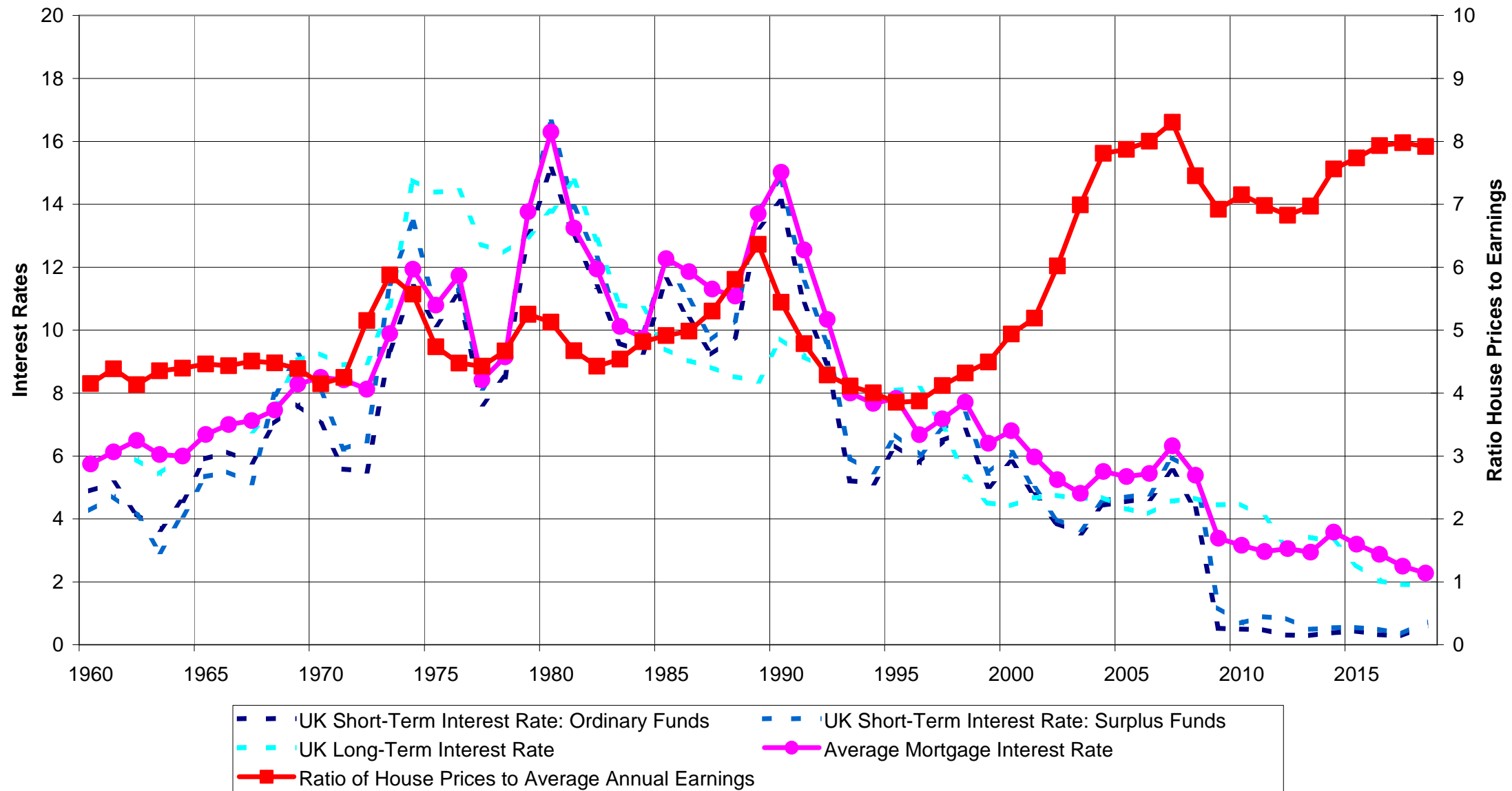
# Ratio of Average House Prices to Average Gross Earnings



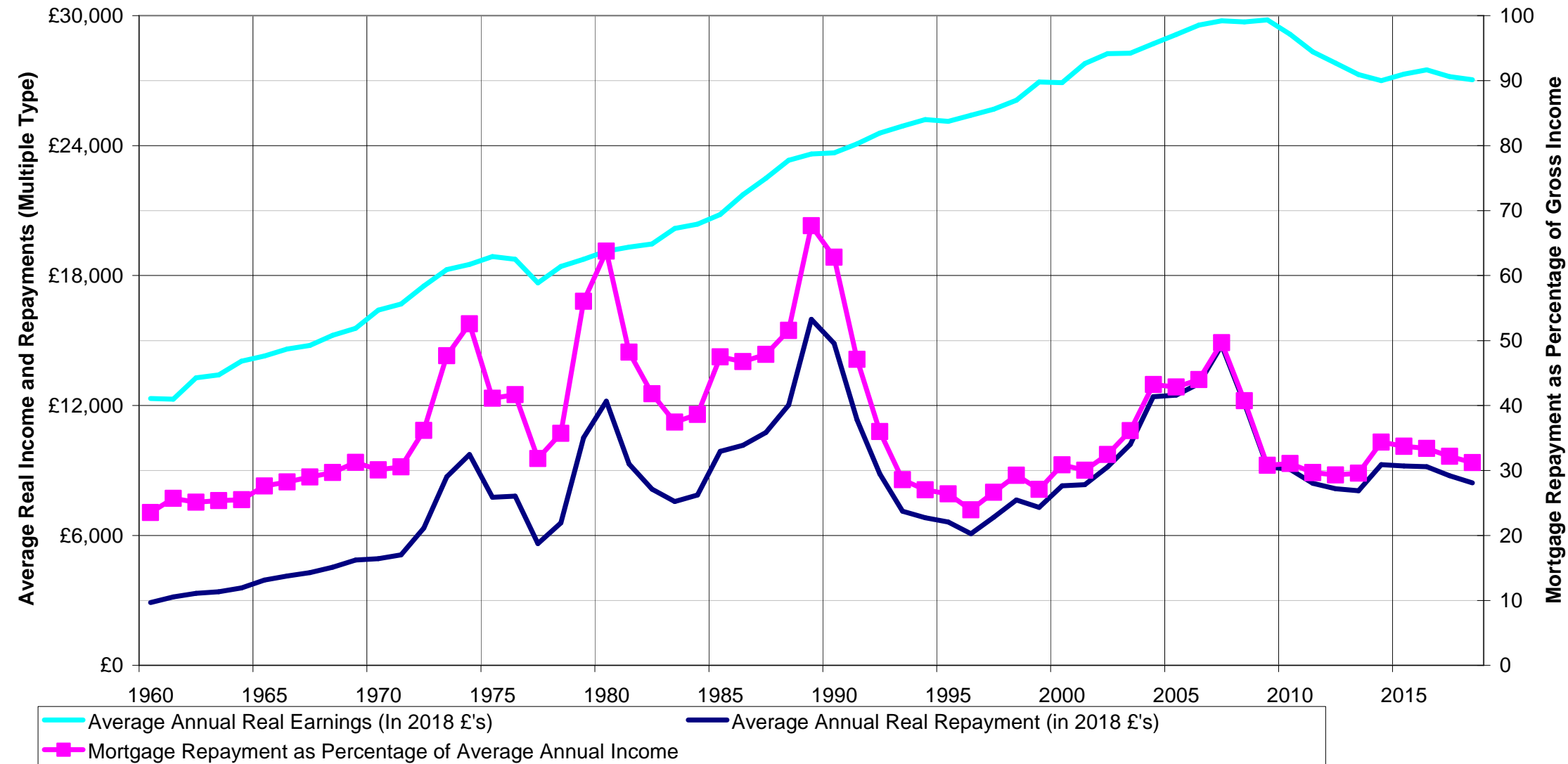
# Comparing Interest Rates and in particular Mortgage Interest Rates over Time



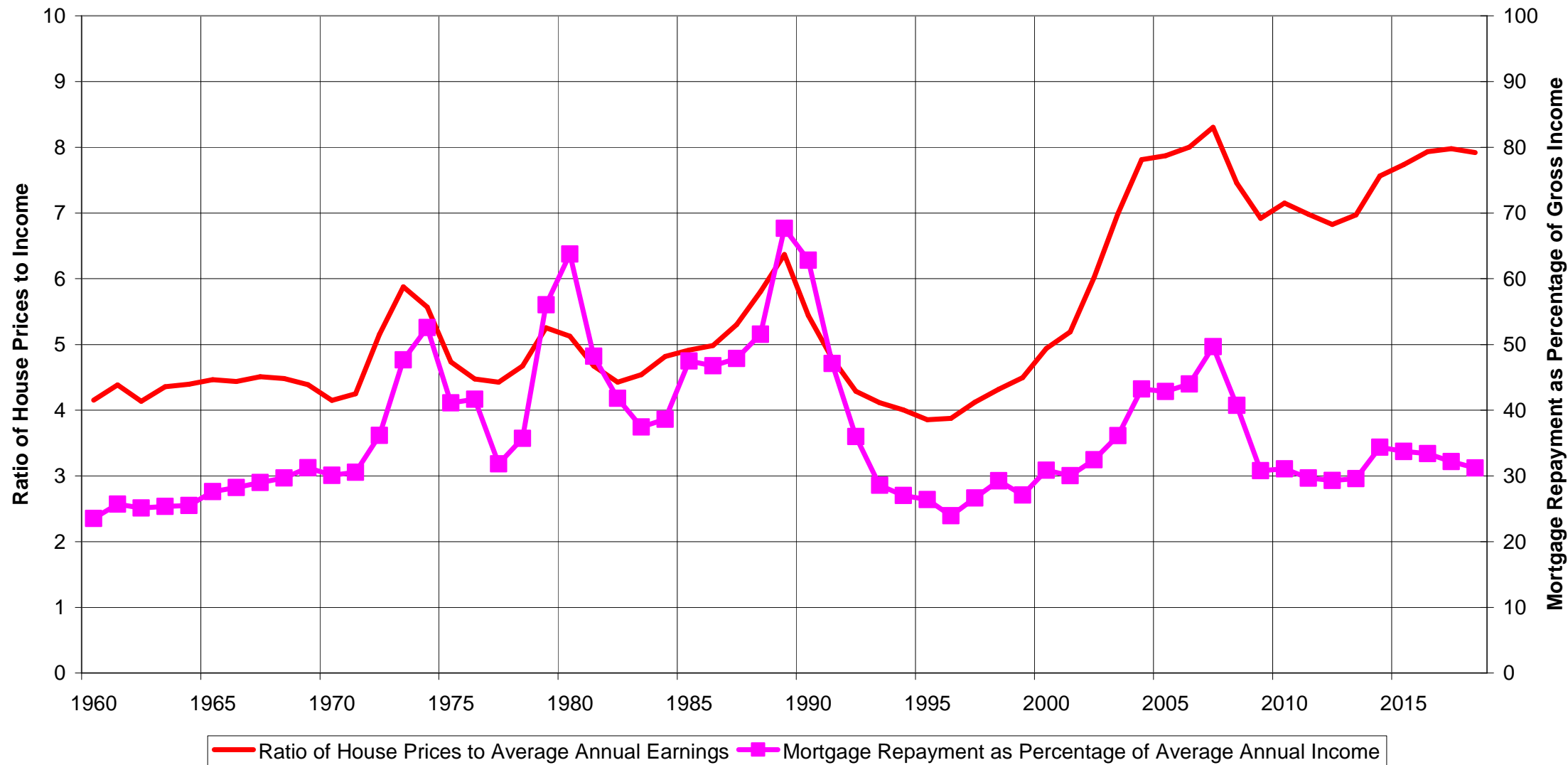
# Ratio of Average House Prices to Average Gross Earnings



# Average Annual Real Earnings and Mortgage Repayments (In Current £'s) for new Mortgage



# Ratio of House Prices to Income against "ability to pay" for new Mortgage



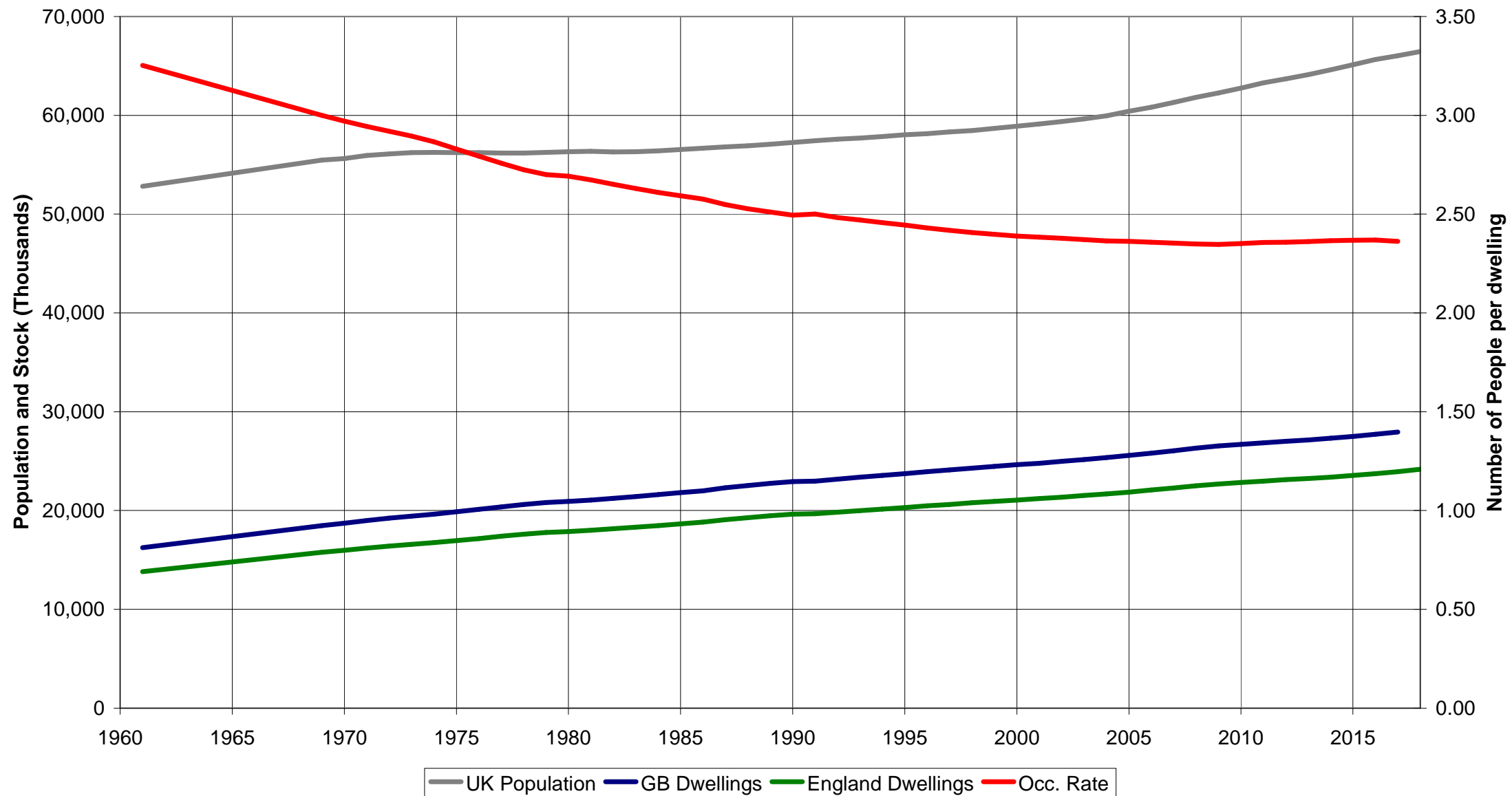
Viewing availability of housing

Or

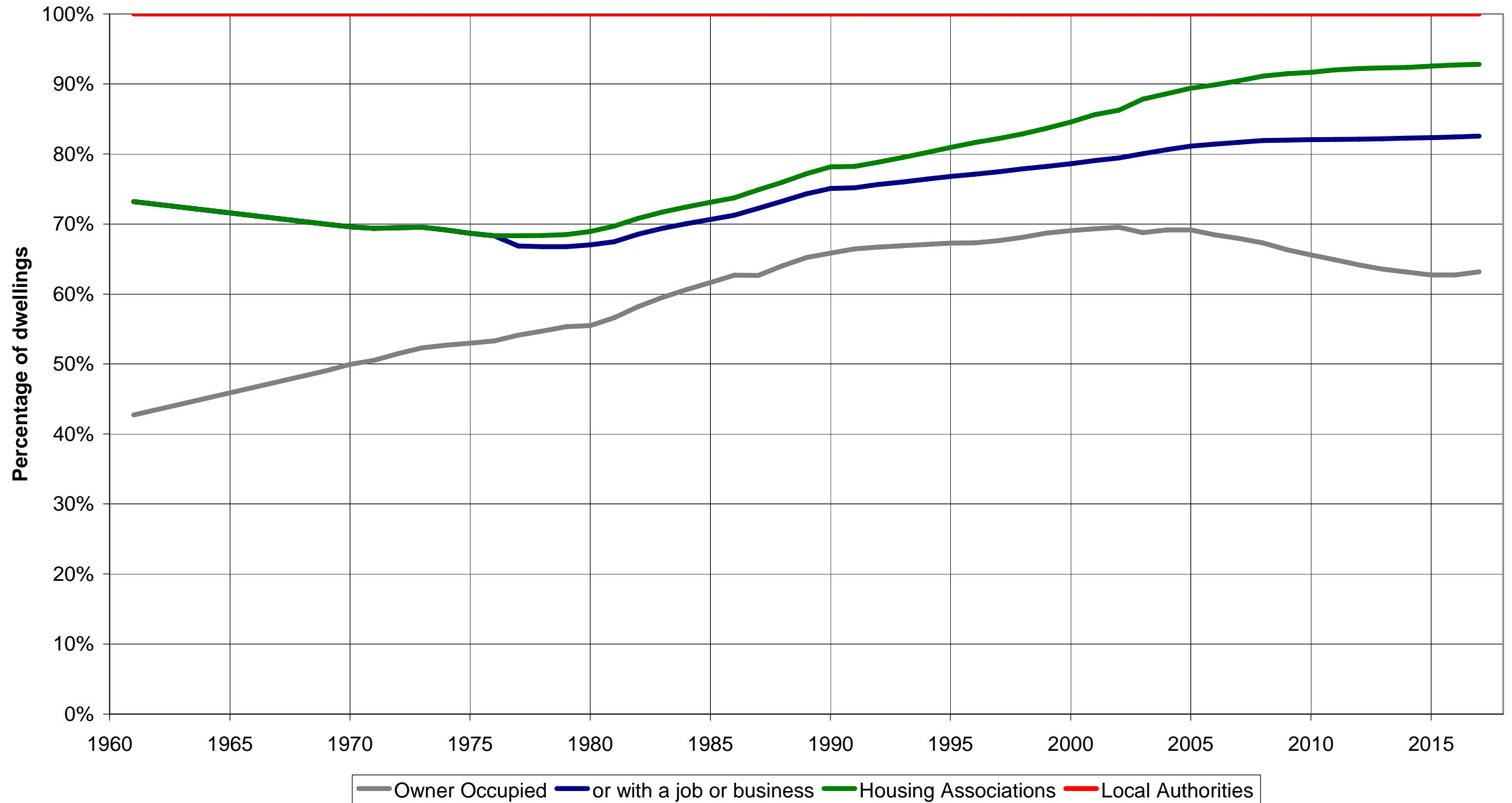
History of Housing Stock



# Population, Housing Stock and Occupancy Rates



# Housing Stock by Tenure (Percentage of Stock)

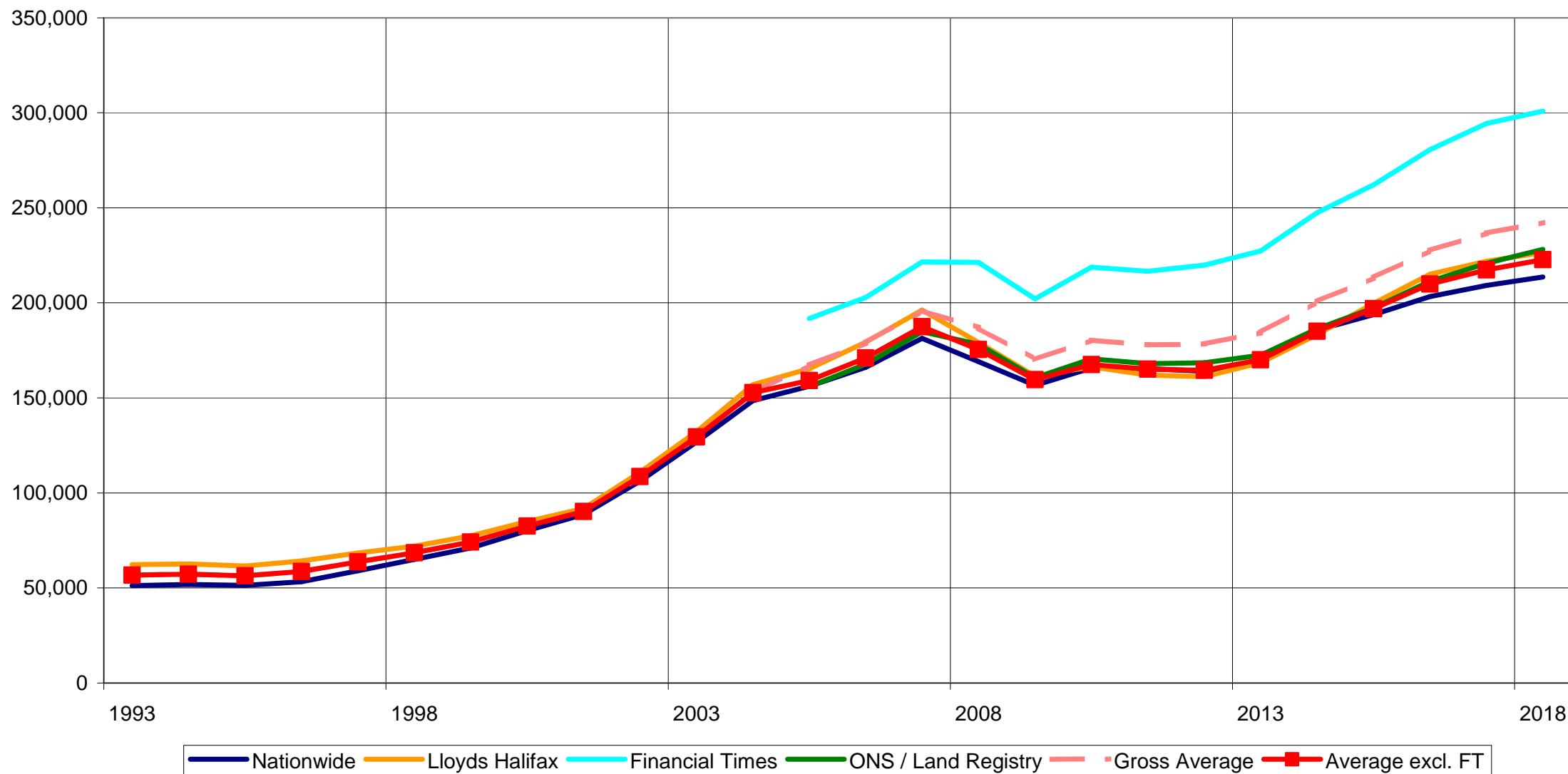


# Comparing house price sources

## And

# Price to earnings ratios

# Comparing BSA Reported Average Annual Nominal House Price Sources



# Comparing Halifax Borrower Earnings to Value Ratio to National Earnings to Value Ratio

