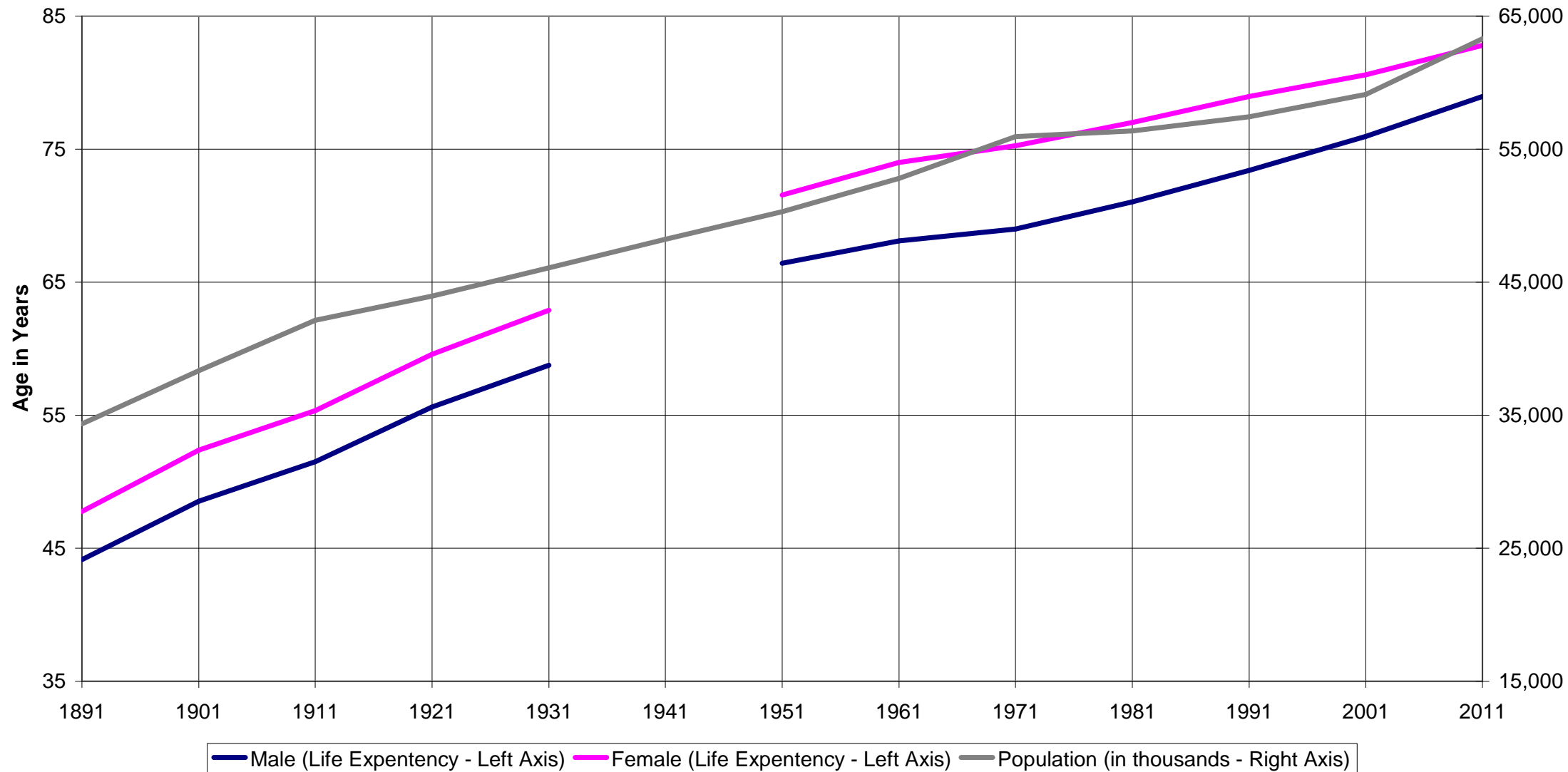


UK Economy

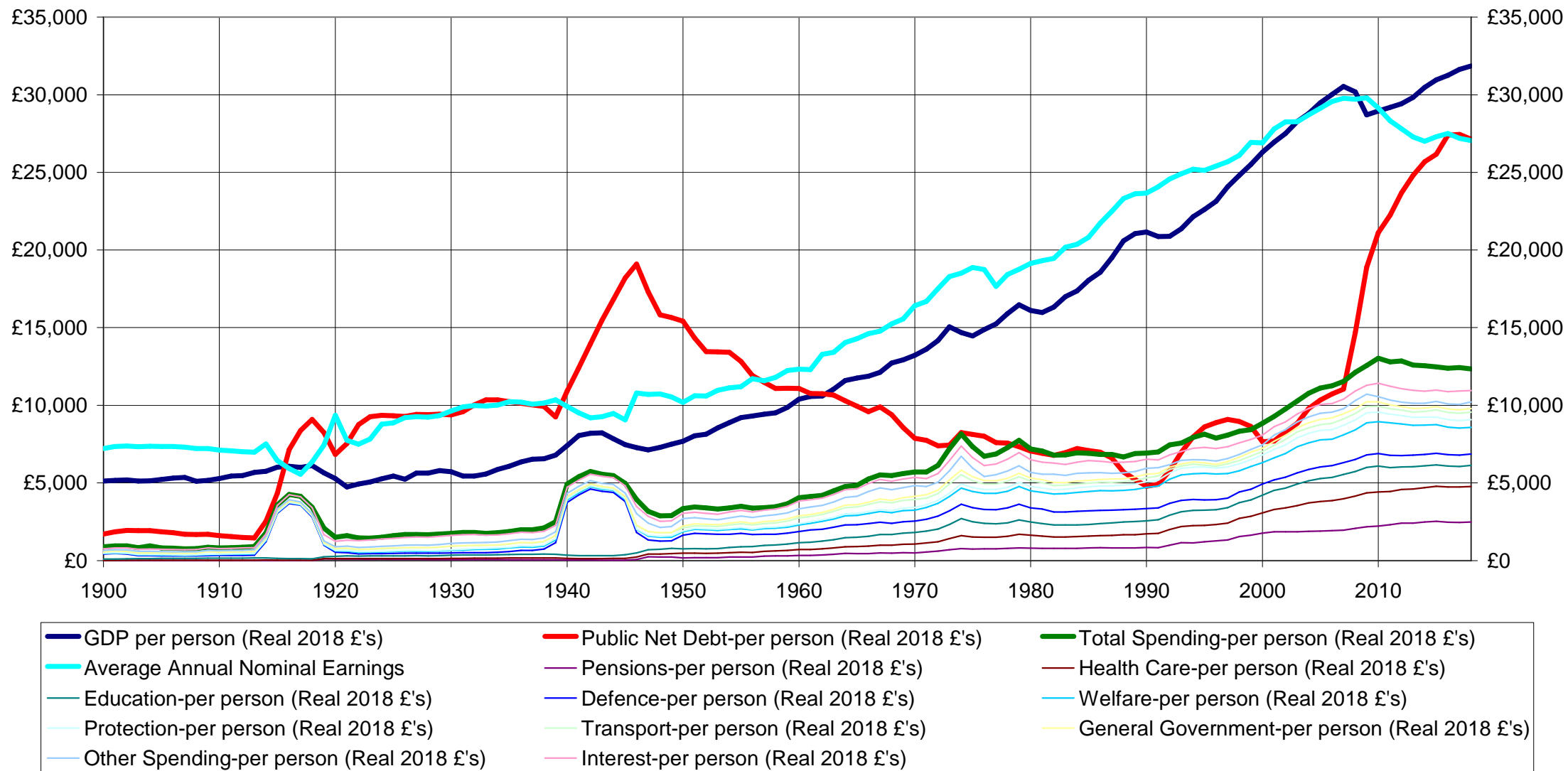
The last century plus

Or four generations

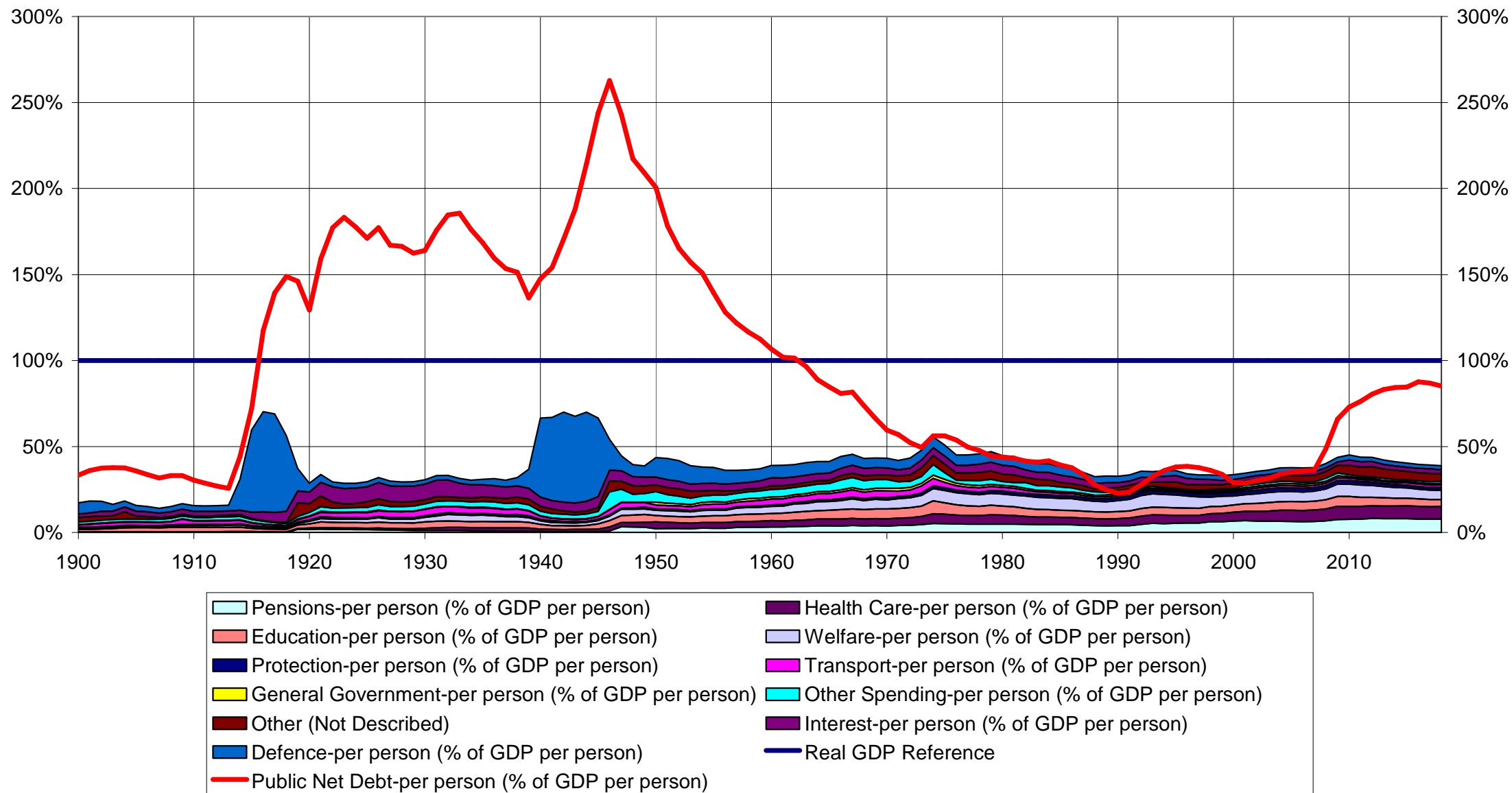
UK Long Term History of Life Expectancy at Birth and Growth in Population



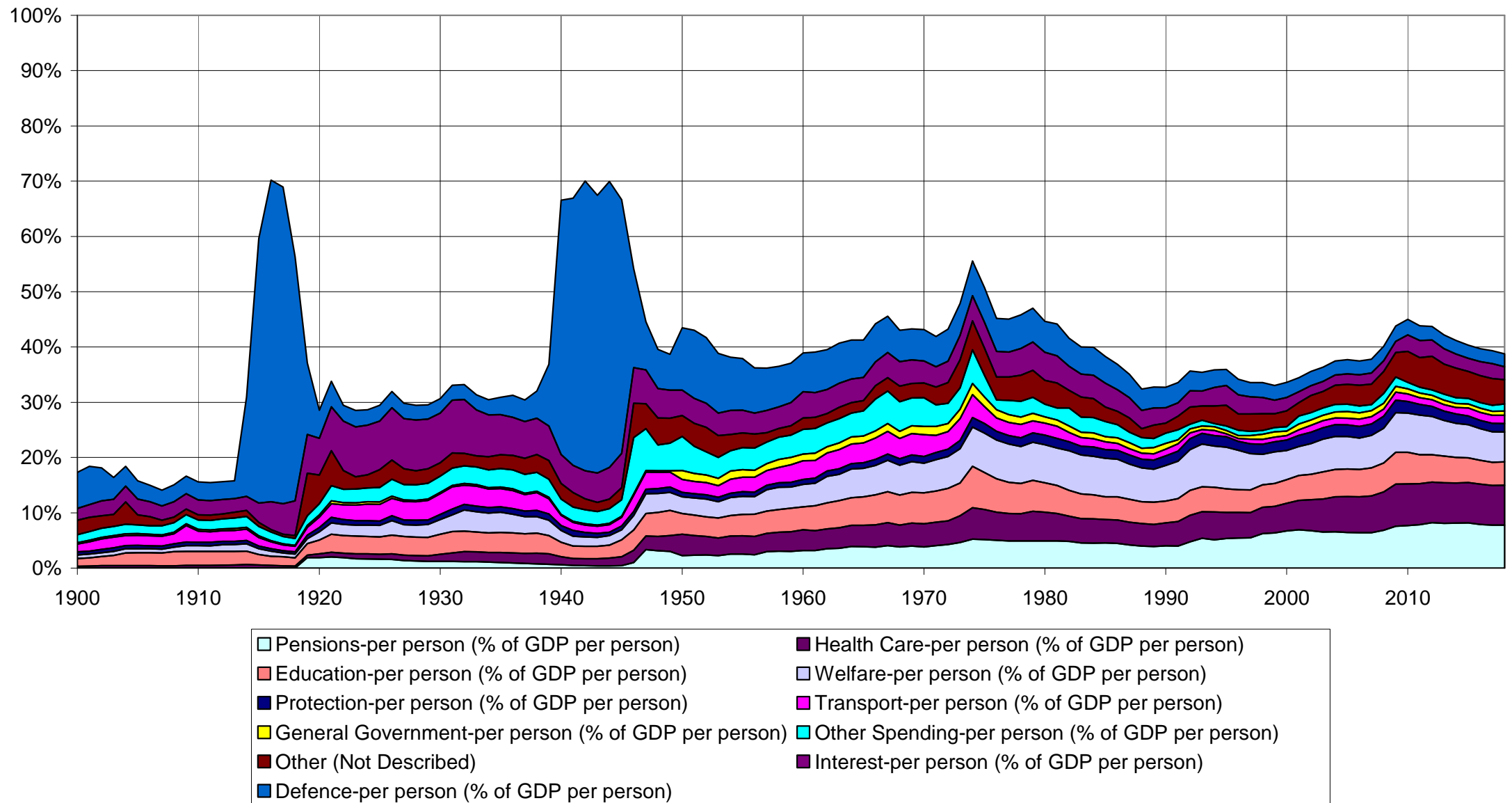
Government Spending, GDP, Average Income and Public Debt per person in Current £'s



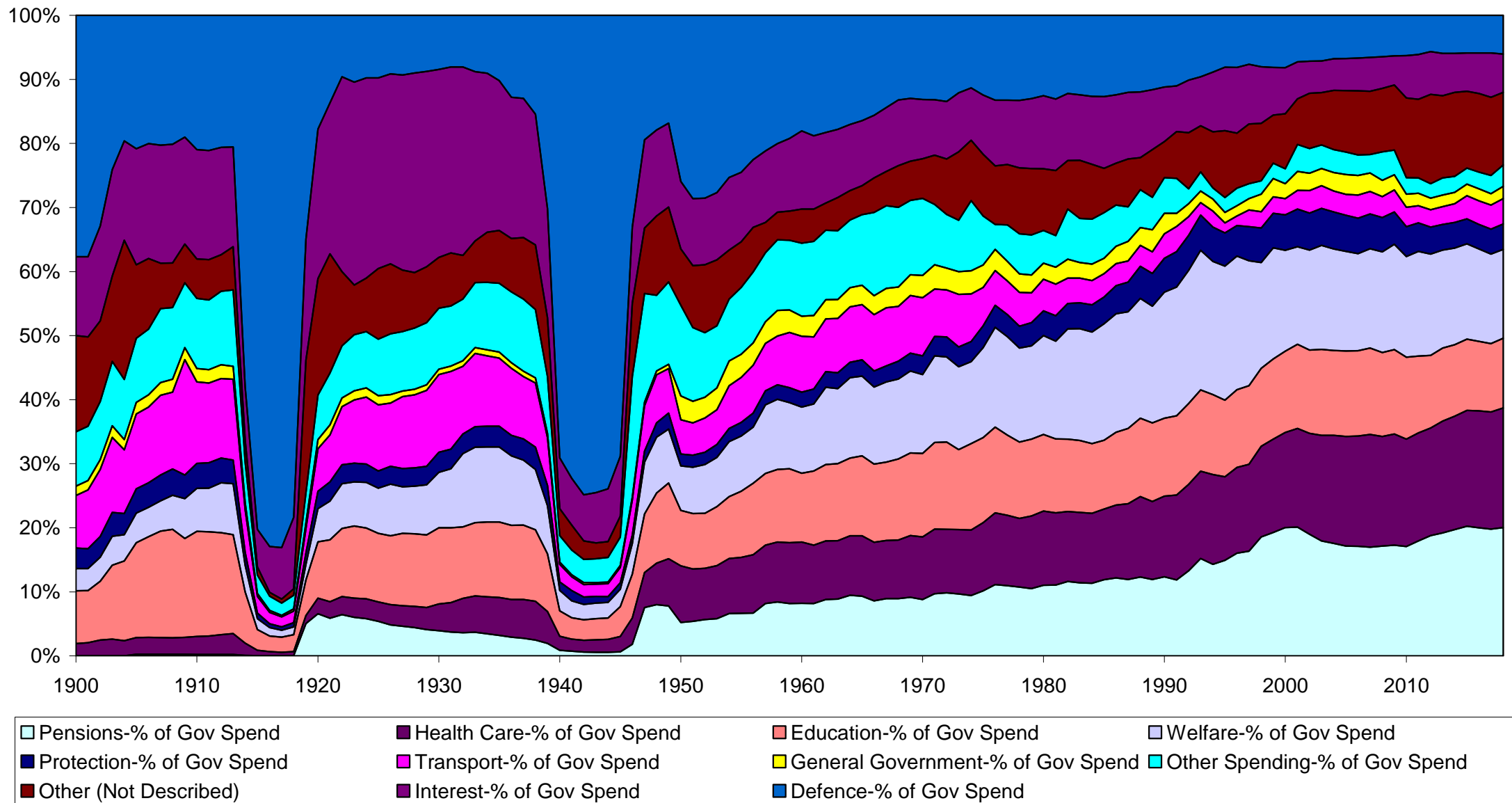
Government Spending and Debt as a % of GDP per person



Government Spending as a % of GDP per person

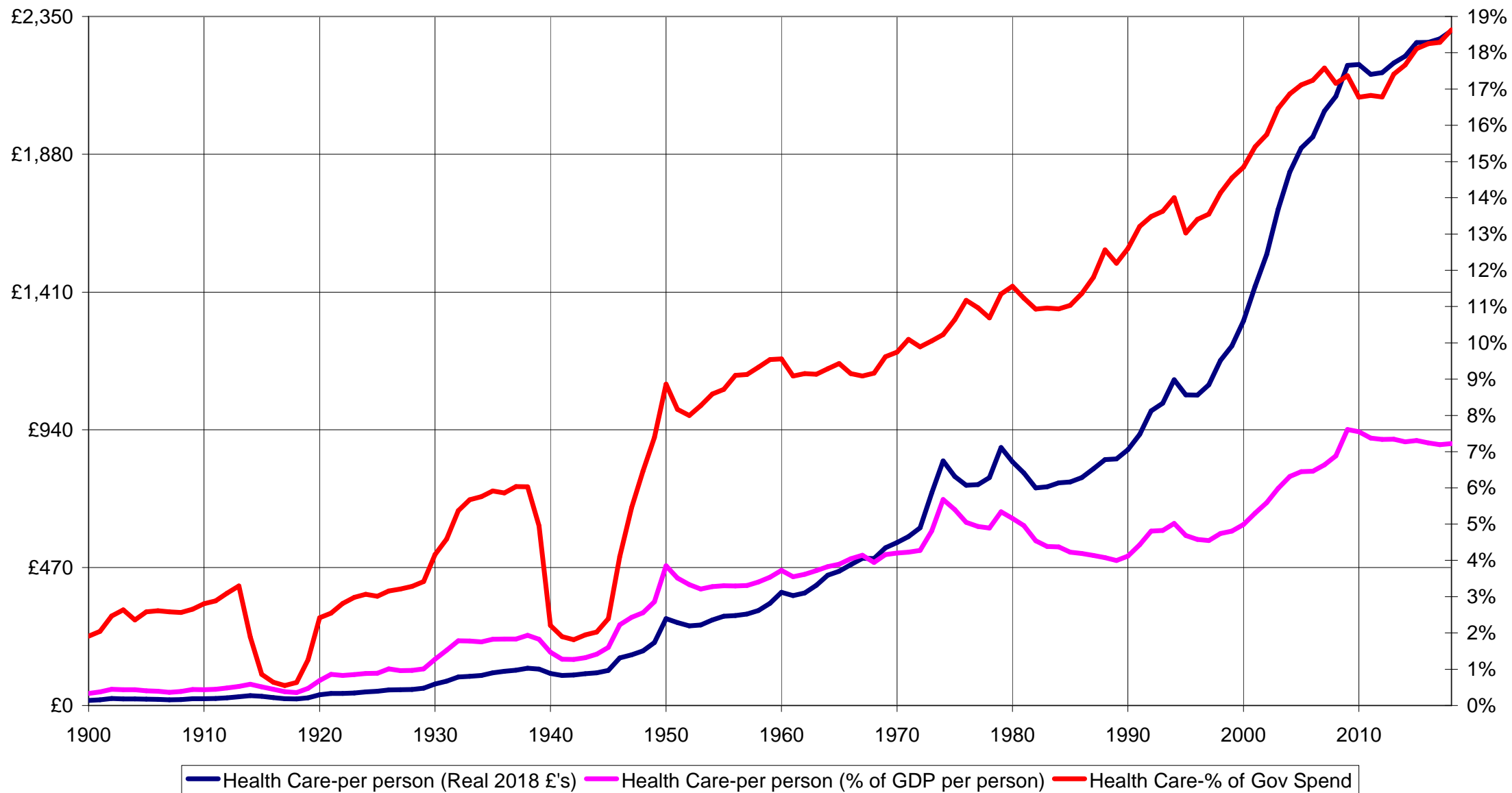


Government Spending as a % of Total Government Spending

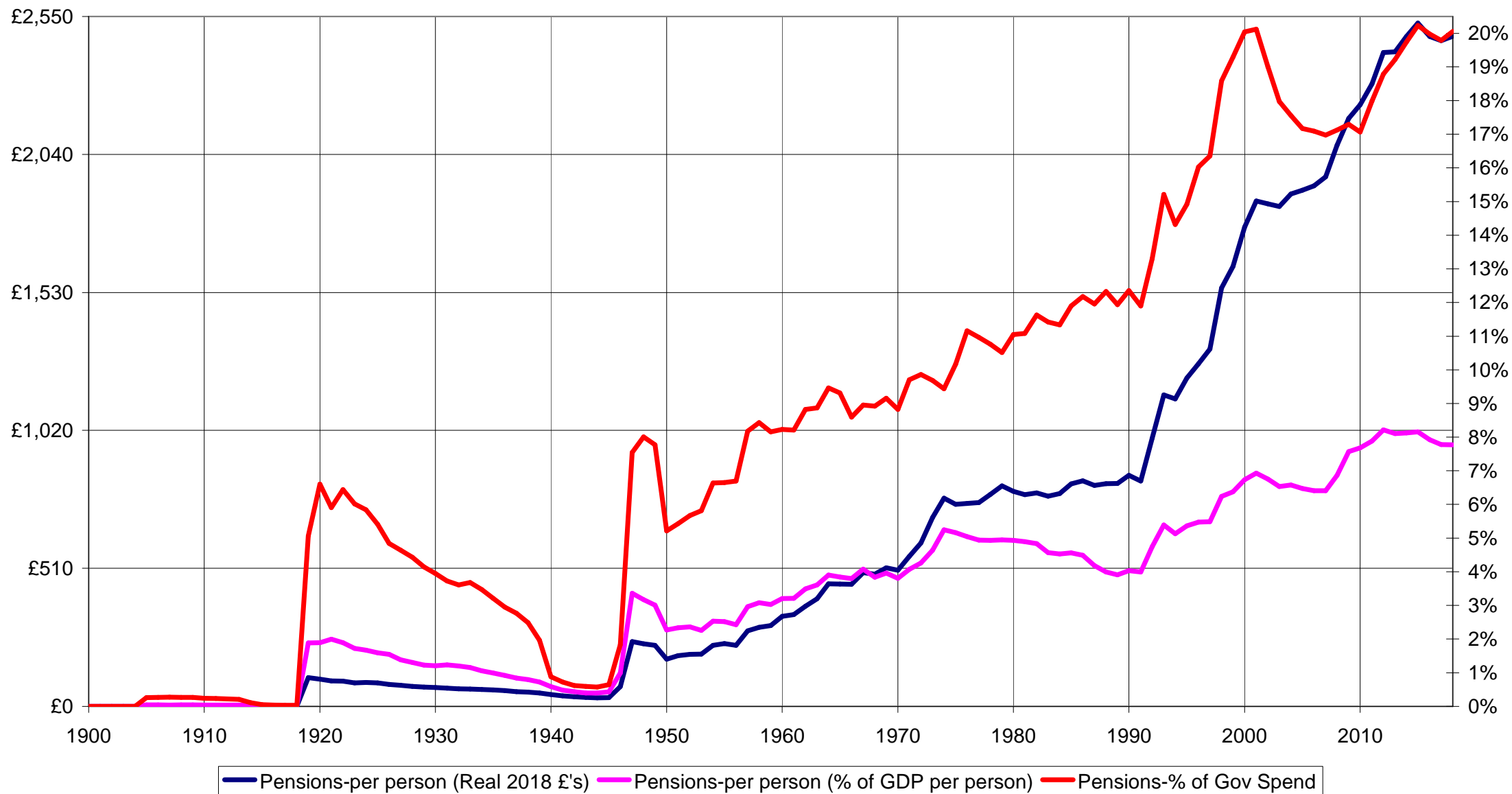


Specific Areas Of Government Spending

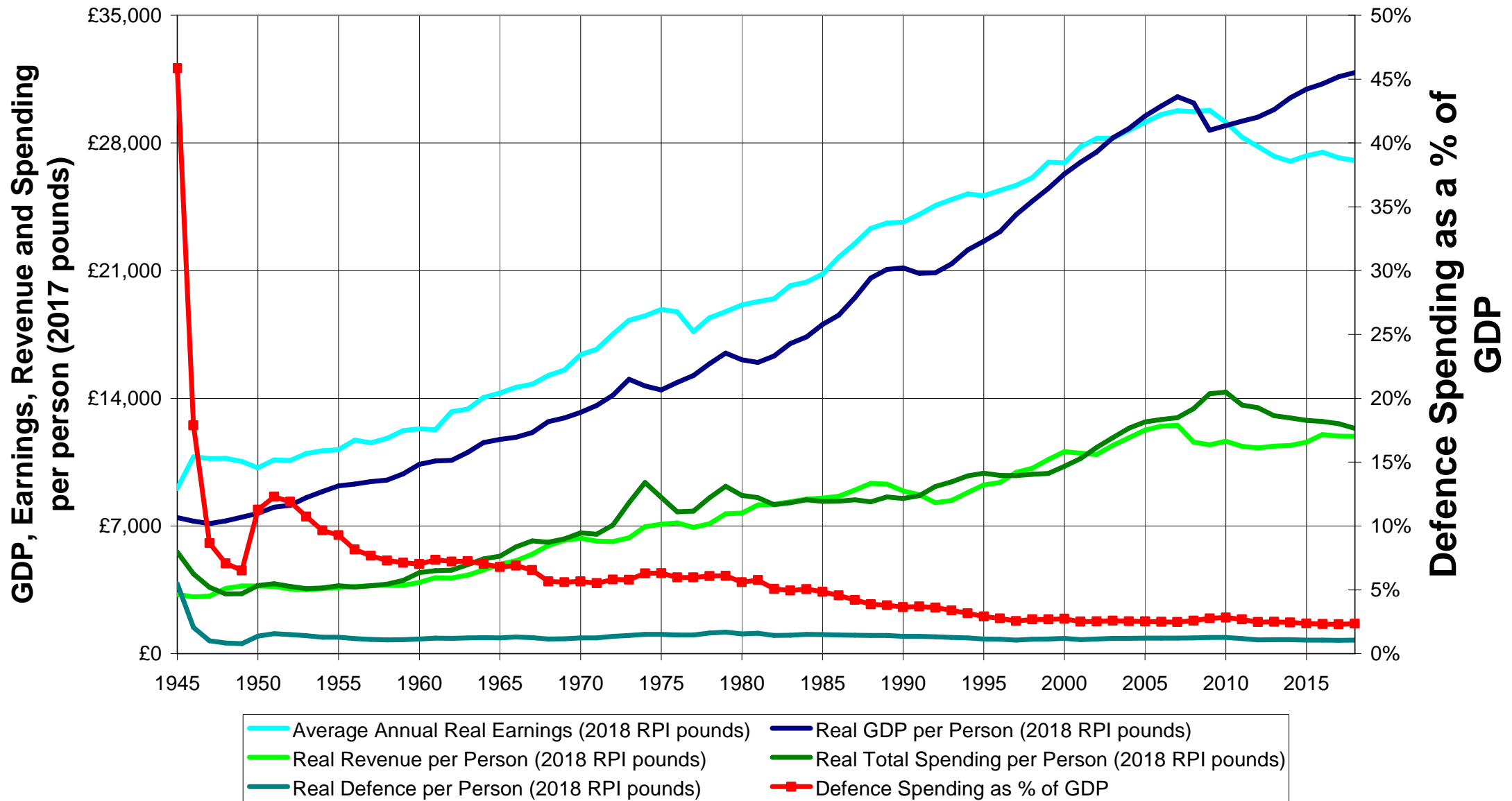
Government Health Care Spending-per person (% of GDP)



Government Pension Spending-per person (% of GDP)



UK Defence Spending

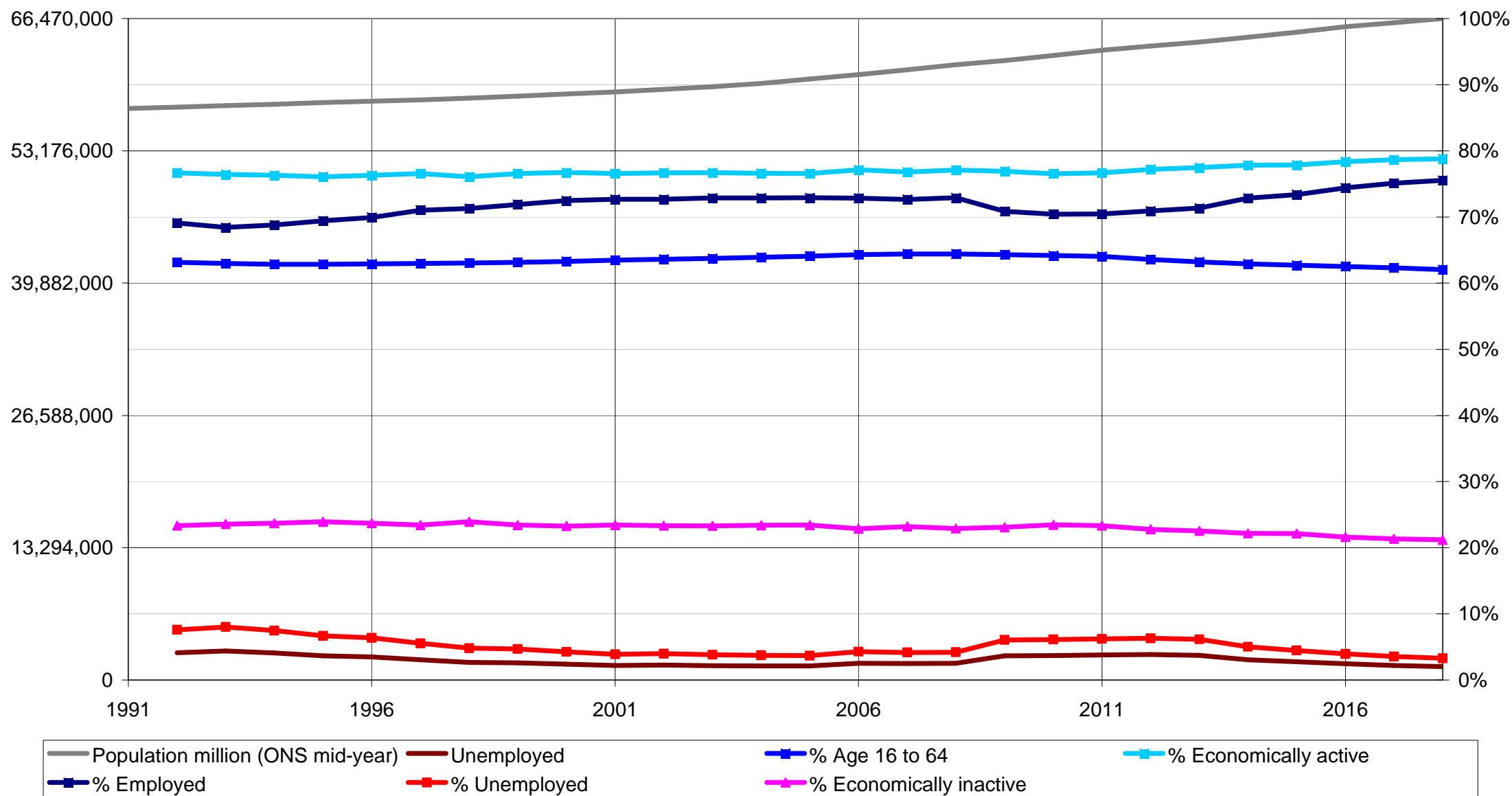


UK Economy

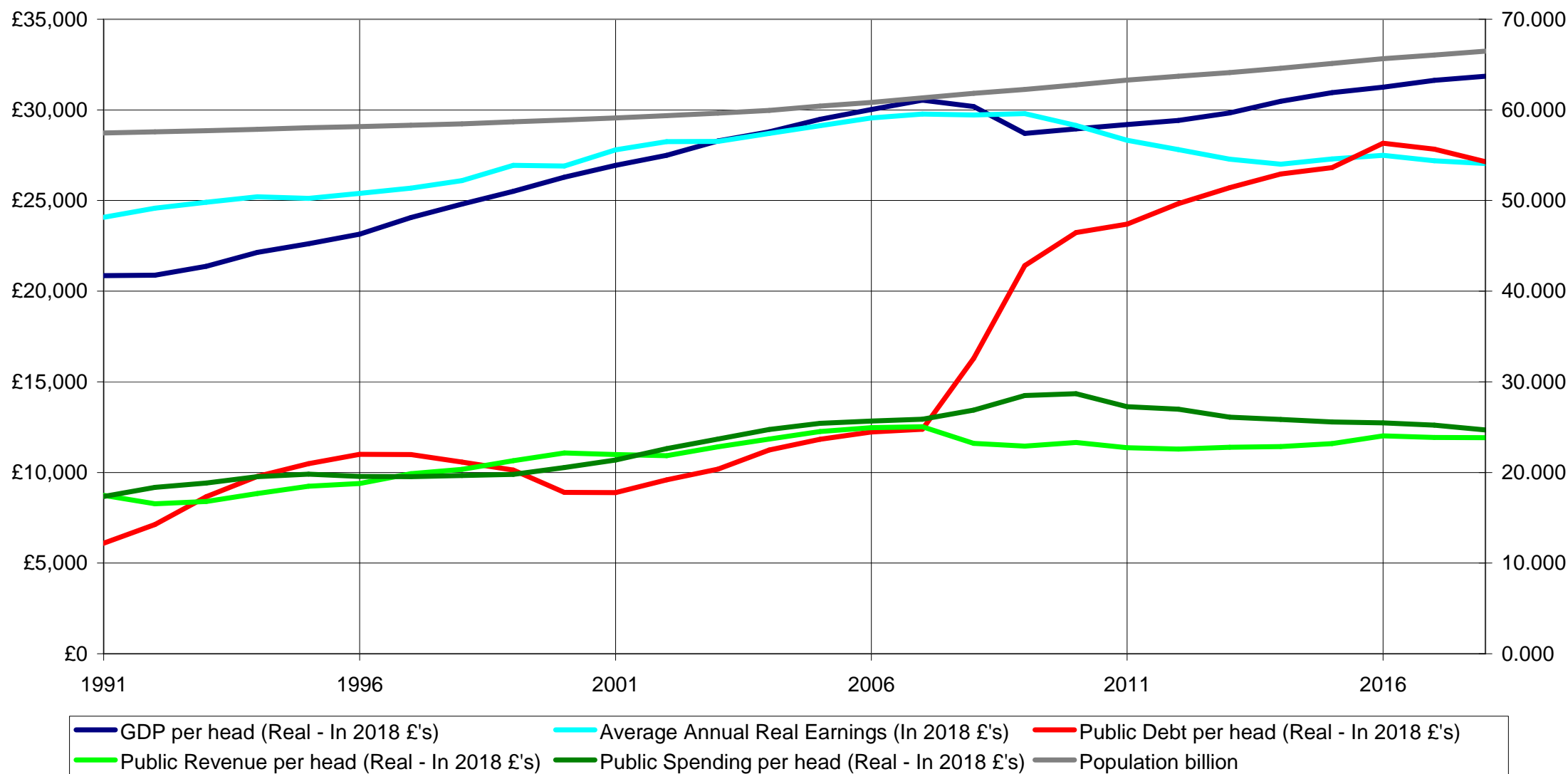
The last quarter century

Or one generation

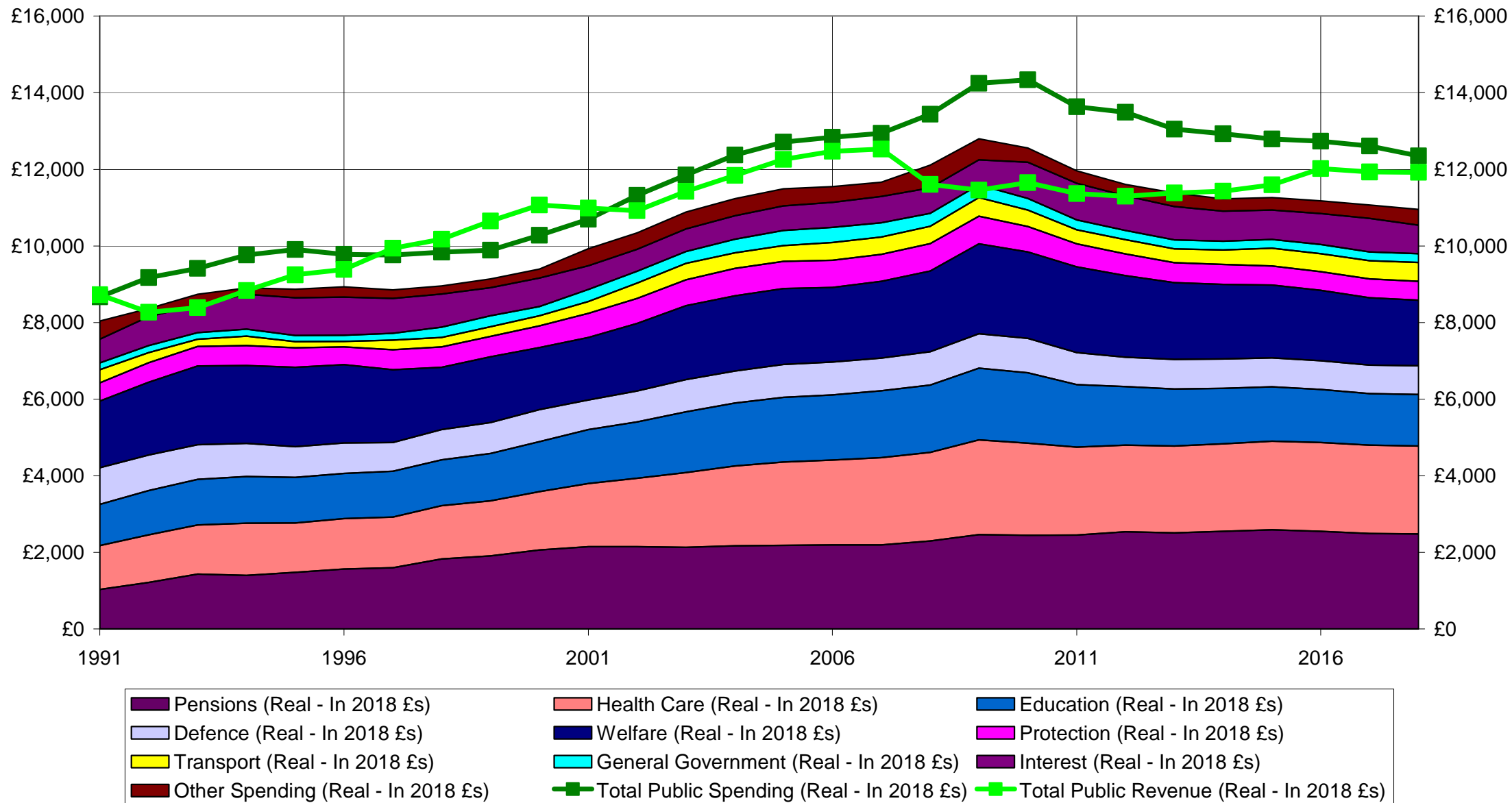
UK Population Growth and Percentage Economically Active



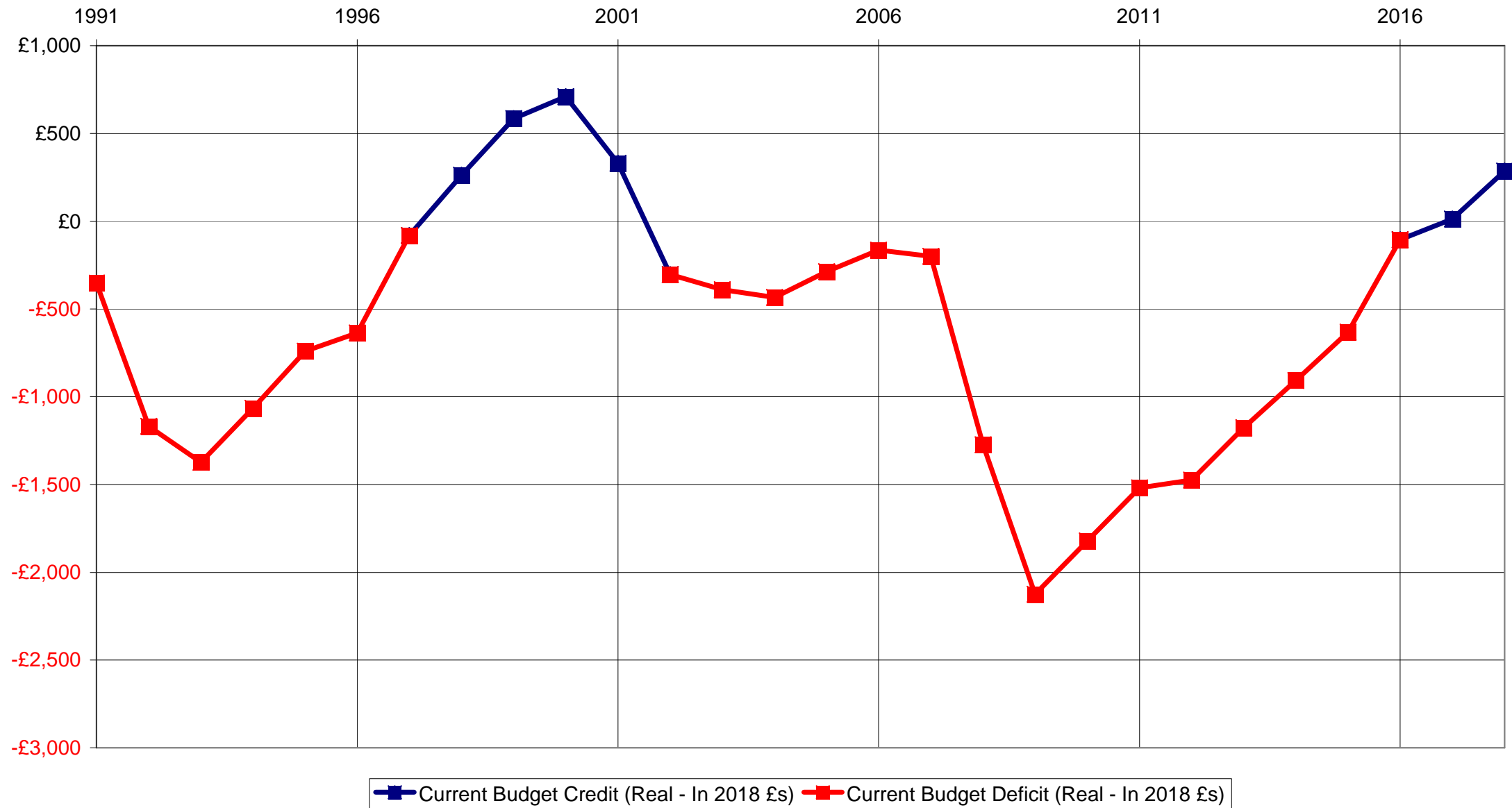
GDP, Public Debt and Government Expenditure per person in real Current £'s



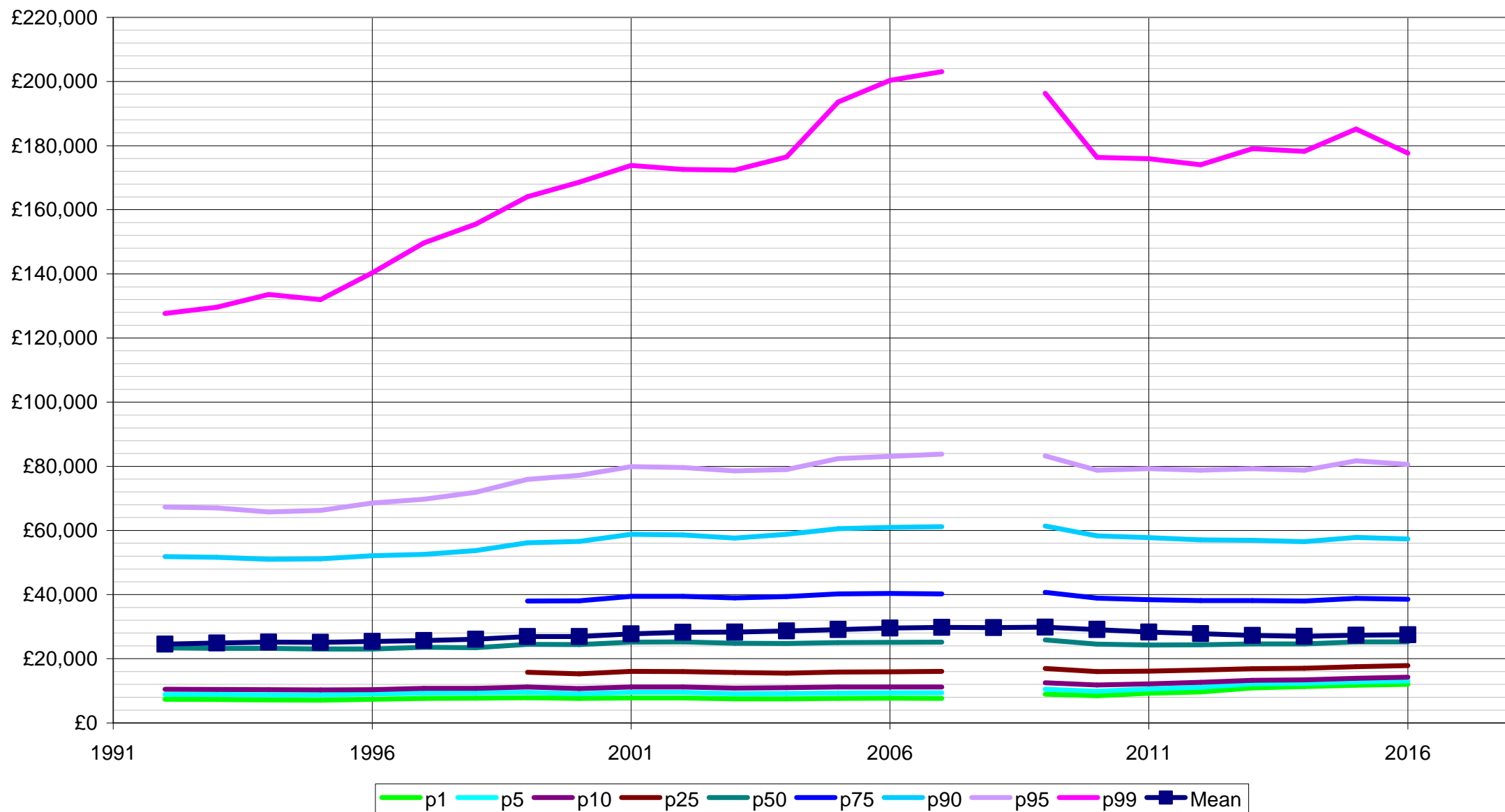
Government Expenditure (and Revenue) per person in real Current £'s



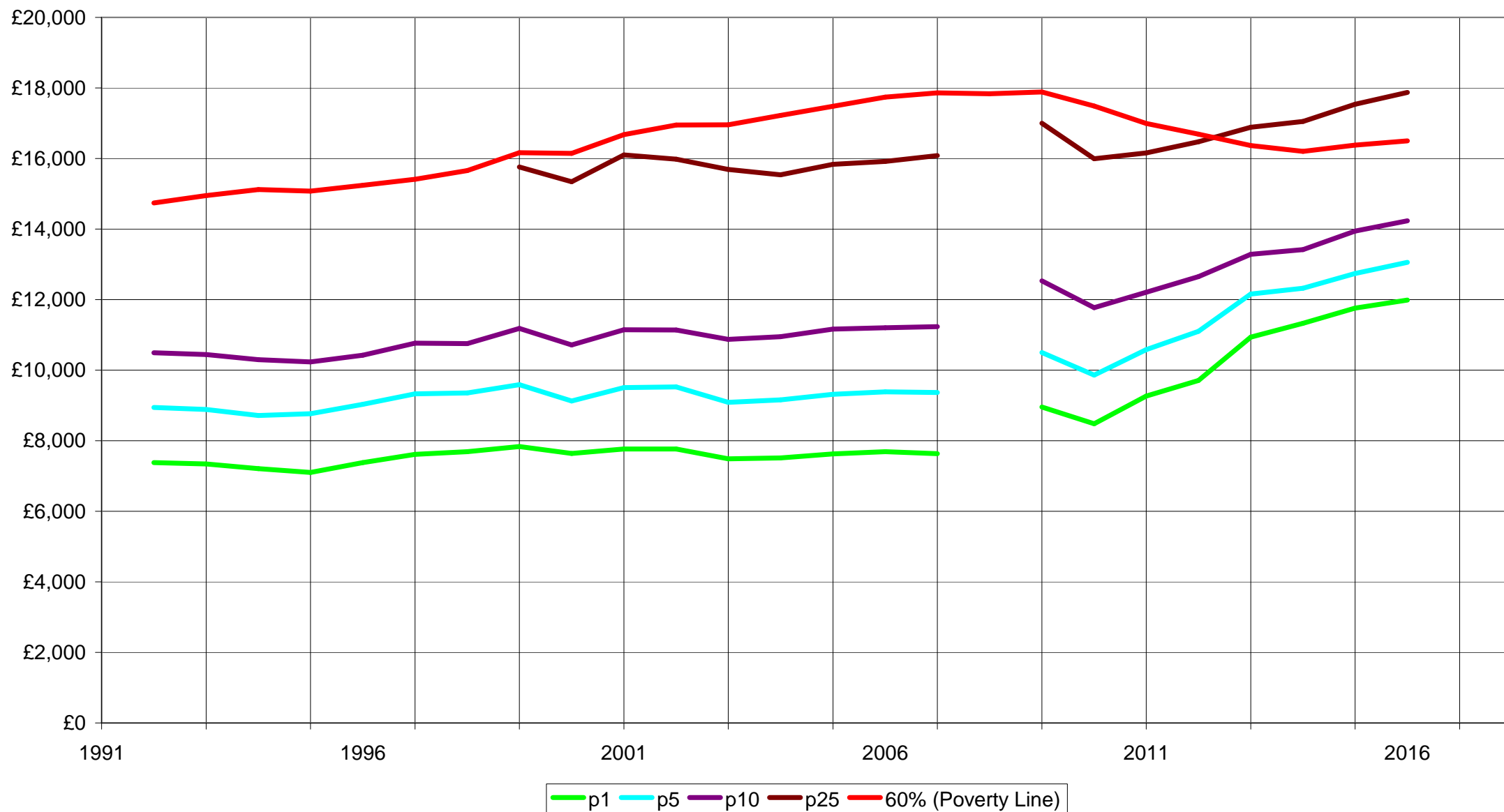
Government Current Deficit per person in real Current £'s



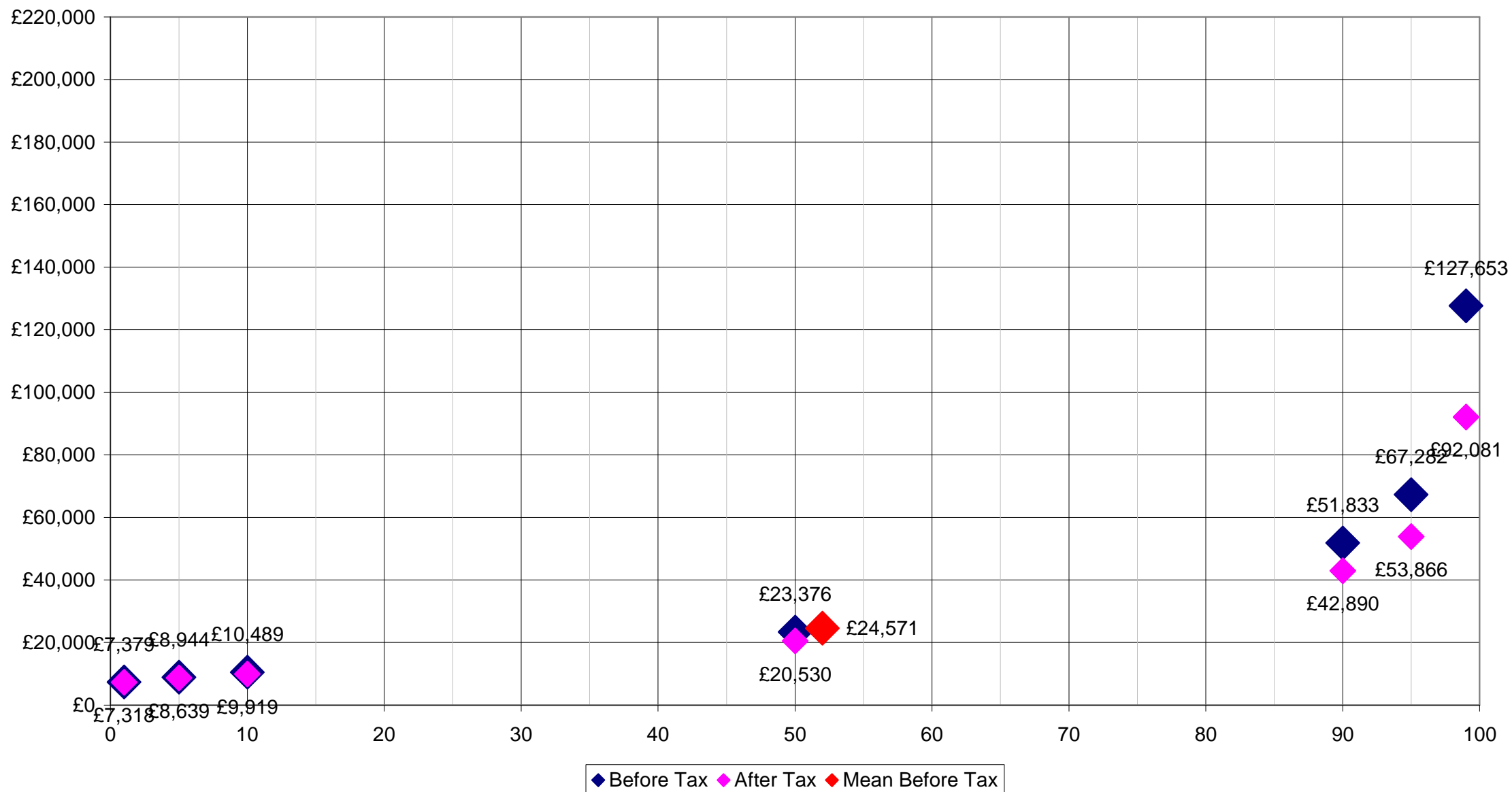
Percent less than - Actual Real Income Before Tax in 2018 £'s



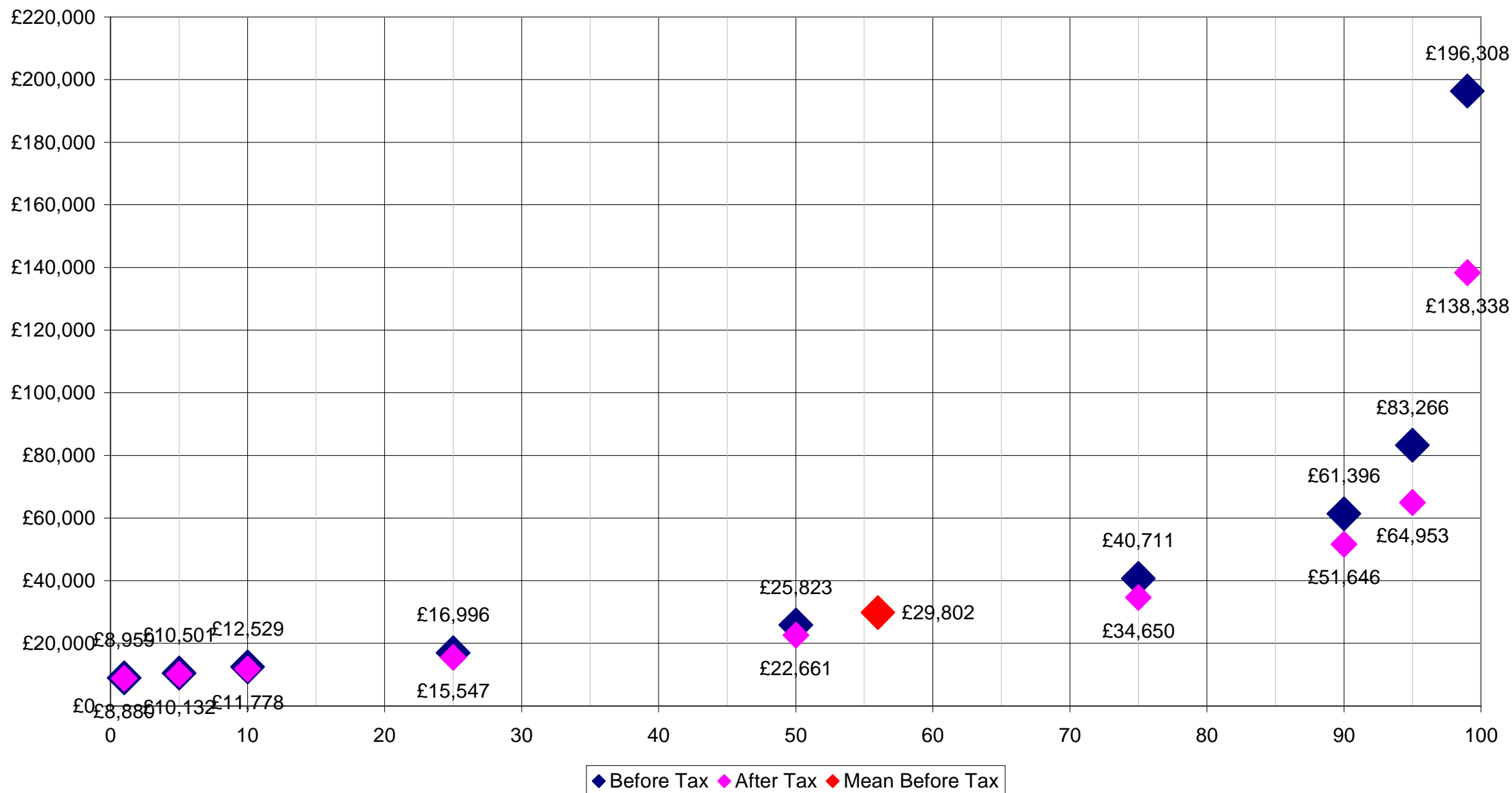
Percent less than - Actual Real Income Before Tax in 2018 £'s



1992 - Tax Payers Income by Percentile (in 2018 £'s)



2009 - Tax Payers Income by Percentile (in 2018 £'s)



2015 - Tax Payers Income by Percentile (in 2018 £'s)

